



ACUITY MASTER
ACUITYMASTER
ACUITYMASTER
ACUITY MASTER
ACUITYMASTER

Starting Acuity Master

Look for the Acuity Master icon on your desktop. The icon will look like the image below.



Double-click on the icon. If the screen is not maximized, click on the maximize button in the top right corner.

Acuity master will need to be calibrated. Please see instructions on how to calibrate Acuity Master.

How to calibrate Acuity Master

Ensure the menu is on the top of the screen. If the menu is not available, press “H” and the menu will appear.

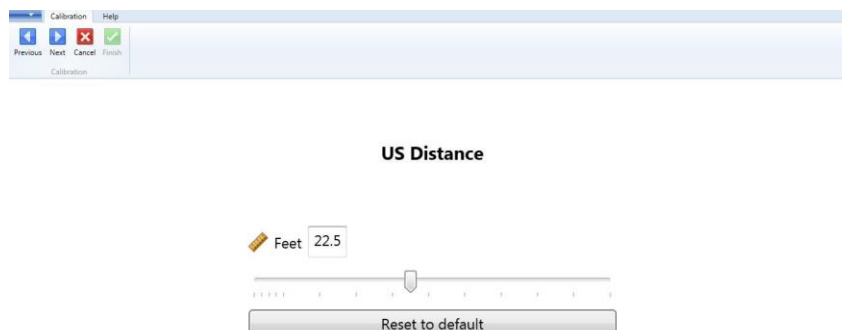
To calibrate, click on the setting button on the menu.

This first screen will look like the image below.



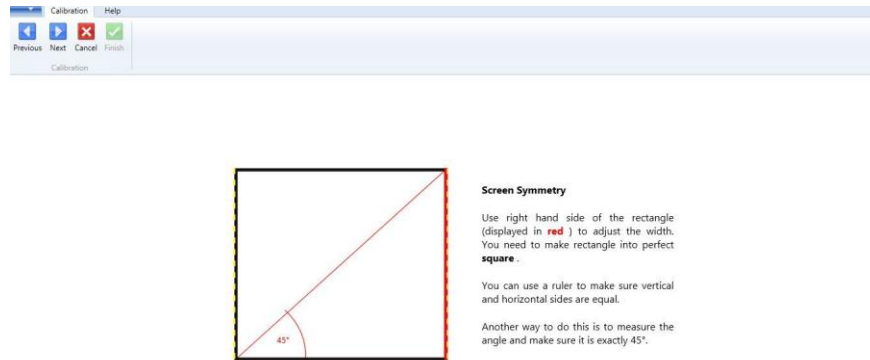
Once the unit is chosen, please click the button labeled “Next” in the menu.

The next screen should look like the image below.



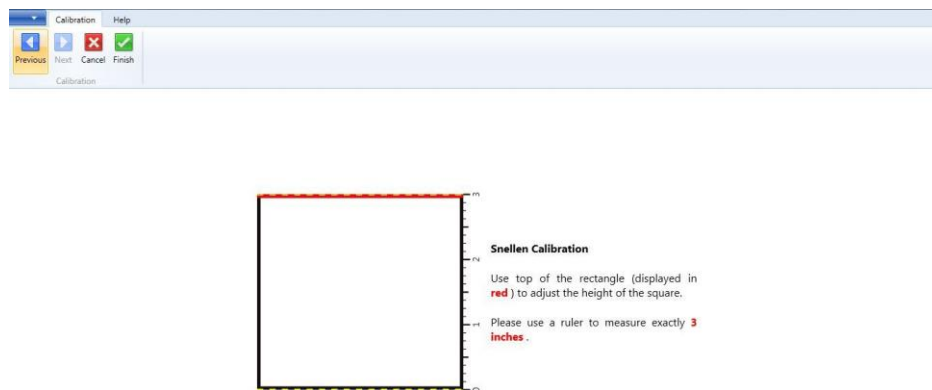
Please enter the distance the patient will be from the monitor. Once the distance is entered, please click the button labeled “Next” in the menu.

The next screen should look like the image below.



Follow the directions on the screen to ensure the vertical and horizontal sides are equal. Once the measurement is confirmed; please click the button labeled “Next” in the menu.

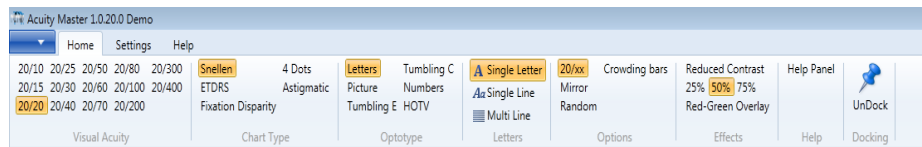
The next screen should look like the image below.



Follow the instructions on the screen to ensure the measurement of the rectangle is correct.

Once completed, please click the button labeled “Finish” in the menu

Home Menu



Visual Acuity

- The numbers in the home menu may be clicked on with the mouse to get to the desired line.
- The corresponding number on the keypad may also be pressed to change to a particular line.
- Scrolling up and down is also possible with the page up and page down key. This can also be done with the arrow up key and the arrow down key.

Chart Type

- The type of chart desired can be chosen by clicking on the appropriate area.
 - Snellen
 - ETDRS
 - Fixation Display
 - 4 dots
 - Astigmatic

Optotypes

- The type of chart need to exam specific patients.
 - Letters
 - Pictures
 - Tumbling E
 - Tumbling C
 - Numbers
 - HOTV

Line Options

- Options for the number of lines/letters displayed on the screen
 - Single Letter
 - Single Line
 - Multi-line

Options

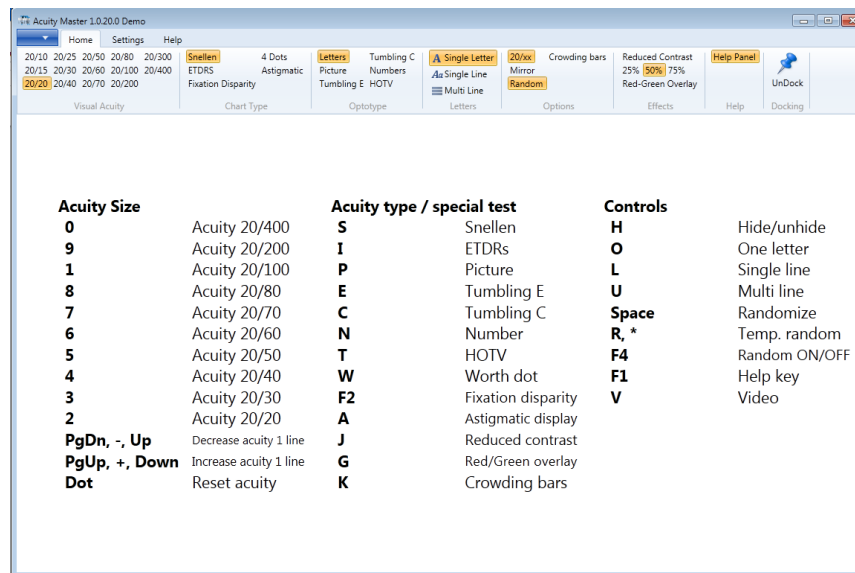
- The numbers can be removed if desired by clicking 20/xx. They will appear if the 20/xx is clicked once more.
- You can switch between mirror display by clicking on Mirror.
- The letters can be switched to random by selecting this option. The basic letters are available after clicking once more.
- Crowding bars can be used in the diagnosis of amblyopia. Clicking the crowding bars option will remove the bars once they have been used.

Effects

- The contrast can be reduced by clicking on the percentage under reduced contrast.
- The red-green overlay is also available in this area.

Help Panel

- The Help panel is available to show all of the shortcuts that are available with specific key strokes.

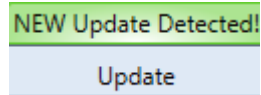


Undocking

- The toolbar can be undocked and moved to another area on the monitor. If a dual screen system is being used, the toolbar can be moved to the monitor that is not being used by Acuity Master.

Features

- Fixation Highlight
 - Scroll over the letter you want the patient to fixate on and the letter is highlighted green.
- Update
 - When there is an update available, the toolbar will show a tab that states update available.



- You can update your AcuityMaster as long as you have an internet connection.
- Click download to start. One the update is downloaded; please follow the prompts to install the update. You will need to re-launch AcuityMaster once installation is complete.

